



Ninilchik Senior Center

PO Box 39422. 66265 Aspen Ave. Ninilchik, AK. 99639 Phone: 567-3988



Coming Up

Board Meeting 22nd
Bingo Starts the 7th
Progressive Split The Pot
Starts the 5th

A Note From the President of the Board:

Happy Easter everybody. Today it sure feels like spring has sprung. I hope all of you survive the snow melt without getting flooded. We have had a ton of snow this year and if it melts too fast it could cause some problems. The warmer weather sure feels good though.

There is quite a bit happening at the Center now these days. The board has decided to open for all activities. Some days and activities we require wearing masks to participate and some masks are a choice. Call the office for more details. As always, your safety and freedom of choice are the main concerns.

The annual member survey will be coming out soon. It is important that you fill this survey out and return it as soon as you receive it. It really does help us how to move forward especially in the current environment.

Our food service has really grown. In house dinners continue to increase and take out meals has continued to increase as well. Please be patient with the kitchen staff as they struggle to meet the demand.

The snowbirds will be starting to fly back this month. Please welcome them home as usual. They are an important part of your Senior Center.

All for now, I think. More next month.

~Dick Hawkins, President





A Note from the Executive Director

April! Finally! As the old saying goes....April showers bring May flowers! Here in our area, I think we're just hoping that April showers will be in the liquid form instead of snow flakes and that they will wash away all that snow that's still sitting around! This April is a big month for us here at the center as we are finally going to be "fully" open! Although fully open looks a little different since COVID, we're looking forward to being able to offer our activities again to everyone.

Speaking of activities, there will be a few changes and additions within our activity schedule starting in May. As we recognize and support that not everyone is ready to be around other people without strong COVID precautions in place, we are happy to let everyone know that starting in May, Monday afternoon quilting/sewing activities will require mask wearing as well as Tuesday afternoon knitting and pool playing activities. Monday and Tuesday activities will take place from 1:30-4:30 and, as previously said, will require a mask to be worn to participate.

For those choosing not to wear a mask, which we also recognize and support, Thursday afternoons are available for sewing, quilting, and gaming activities with Friday afternoons available for knitting and pool playing. Thursday and Friday activities will be from 1-4 and no masks will be required. For all activities, NSC staff will continue to sanitize all areas as needed and our three COVID particle catching air purifiers will be running continuously.

Fully open also means that BINGO will be starting again!! This has been a very popular activity for us and we're looking forward to starting it again. Wednesday afternoons are BINGO days, starting at 1:15 pm. Masks are not required for this activity but for those who wish to wear them, please feel free to do so. In addition, social distancing is possible for everyone with our current dining room setup where BINGO takes place.

We are also excited to start up our Progressive Split the Pot Raffle again in April! This has been a very fun and well liked activity here at the center. Starting April 5, you may once again purchase a ticket for the raffle for the cost of \$1 per ticket. The drawing will still be held each Friday at noon with all other rules staying the same, except one. This rule has changed significantly in light of the COVID virus. In the past with this raffle, the winner of the winning ticket each week needed to be present to win the full prize amount. As the pandemic continues to persist in our world, we recognize that not everyone is ready to come back into the senior center for congregate dining and as a result, the person with the winning ticket may not be "present" in the dining room for the drawing. To make this raffle fair for all, this rule has been changed and the winner will no longer have to be physically present for the drawing to win the full amount of the prize. Tickets may only be purchased if your senior center membership is current and you are physically present in Alaska, but you do not need to be physically present in the dining room on the day of the drawing (Friday's at noon). The first Friday drawing will take place on Friday, April 9.

In the near future, we would also like to start up our belly dancing and beginner's yoga classes again as well, however, this will be dependent on the interest level. We offered both before the pandemic began without much interest; however, I'm hoping that will change as physical exercise is so important to us all! Although both of these classes are physical in nature, they are both low impact and targeted to each individual's need. Modifications can also be made within each class for those that need it. If you are interested – please contact the office to get on the signup list. We have instructors ready and willing to teach the classes, now we just need people wanting to participate – so please call if interested.

As you can see, fully open means lots of things going on! With many of our snow birds planning on coming back soon, summer will be in full swing before we know it. We hope to see everyone over the coming months. My door is always open so if you have a concern or idea, please don't hesitate to contact me – we're all in this world together so let's just take the time to try and enjoy each day to the fullest! Happy Easter and Happy Spring everyone!

~Julie Otto



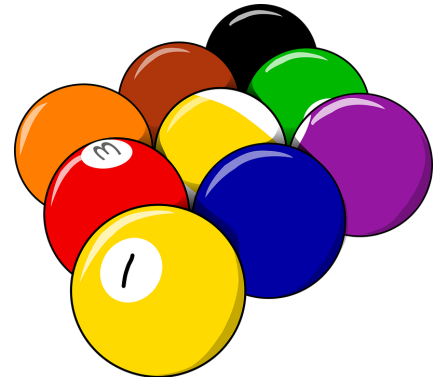
Bingo Starts Wednesday April 7th @ 1:15 pm



Thursdays Game Day Starts @ 1pm



Pool Playing Fridays: 1- 4 pm



Progressive Split The Pot will be starting back up April 5th. Need not to be present to win. Call the office for more details. First Drawing will be on April 9th.

Ninilchik Senior Center (NSC) Progressive Split the Pot Raffle

Cost: \$1 per ticket. Members may purchase as many tickets as desired each week. Tickets purchased are valid only for that week's drawing. Tickets must be purchased each week until 11am Friday if the member wishes to participate in that week's drawing.

Drawing Time: Every Friday at 12:00 pm

Location: Ninilchik Senior Center 66265 Aspen Ave Ninilchik, AK

Progressive Split the Pot Raffle Rules:

One winner every week.

Winner does not need to be present to win.

Open to NSC members only. Membership must be current.

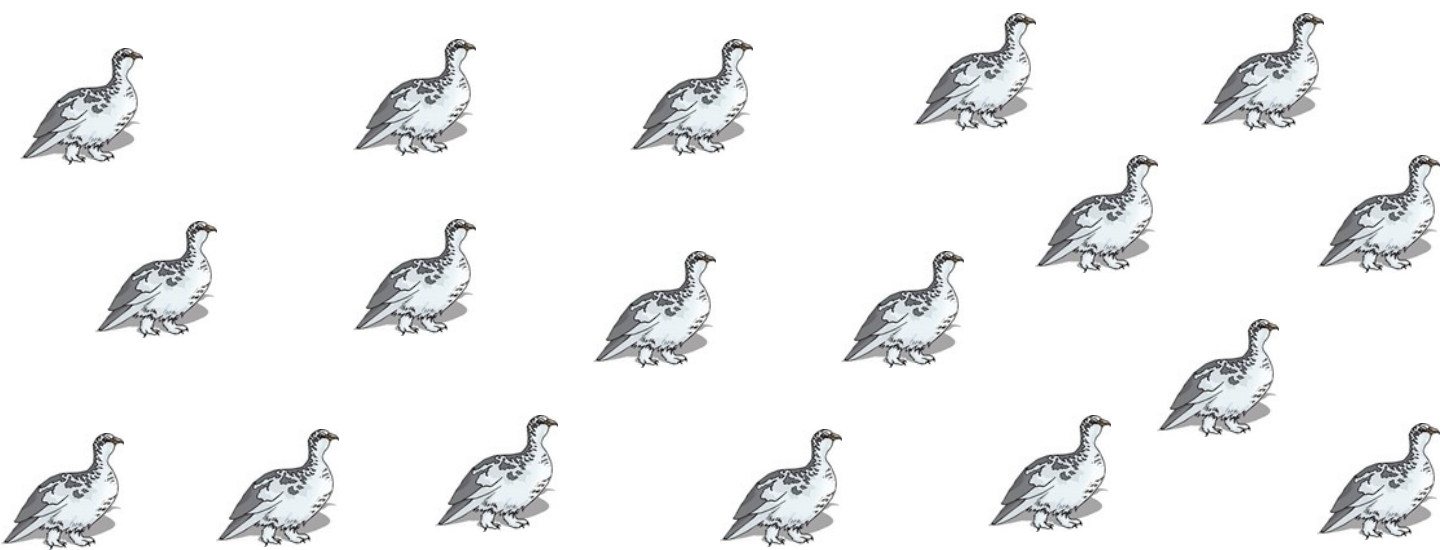
The Current Raffle will last up to 16 weeks. Future raffle duration may change without notice but will be announced at the beginning of each new raffle.

16 cards

(1) Eagle: grand prize winner: 50% of the pot

(1) Owl: 10% of the pot

(14) Ptarmigan: \$5





We're Searching for Volunteers

We are looking for volunteers who would like to help out at the Gazebo this summer. We are opening it back up in May. If you are interested please call the office.



We are also accepting donations! Now is a good time to donate! If you have anything you would like to donate please drop it off at the Senior Center during normal business hours. **9am-4pm**. Please do not drop your donations off at the Gazebo. We greatly appreciate it!

Cheryl's Dugout Chat



Rumor has it Spring is here. From what I hear it is going to be a while before all the snow melts. April usually means flowers start to pop up, Easter, April Fool's Day, and my favorite BASEBALL SEASON BEGINS!!!

April Fool's Day

The "spaghetti-tree hoax" was a three-minute broadcast in 1957 on April Fool's Day by the BBC showing a family in Southern Switzerland harvesting spaghetti from the family "spaghetti tree." At the time spaghetti was relatively unknown in the UK, so numerous British were unaware that it is made from wheat, flour and water; a number of viewers after the show contacted the BBC for advice on growing their own spaghetti trees. Even now decades later, this is called one of "the biggest hoaxes that any establishment ever pulled."

Baseball Trivia:

MLB first game of 2021 season is April 1, (no this isn't a joke)

MLB is hoping that this year can be the first season since 1968 to have every team play their first game of the season on the same day.

- What team did Babe Ruth play for before joining the Boston Red Sox?
- What team moved to D.C. to become the Washington Nationals in 2005?
- What 1929 feat did Lee Richmond perform in a Major League first?
- What is the oldest active ball park in Major League Baseball?
- What baseball announcer was famous for his signature phrase, "Holy Cow!"?
- What pitcher ended Joe DiMaggio's 56-game hitting streak?
- Where is the National Baseball Hall of Fame & Museum located?
- Where was the first Major League Baseball All-Star game played?
- Who holds the highest career batting average of all time?
- What were baseballs wrapped in before the introduction of cowhide in 1974?

Cheryl's Dugout Chat



GREAT BASEBALL SONGS TO GET YOU IN THE MOOD:

Centerfield by John Fogerty

Cheap Seats by Alabama

The Greatest by Kenny Rogers

Take Me Out to the Ballgame - by Countdown Kids

The Old Ballgame - by Ray Castoldi

Ain't Nobody Gonna Take That From Me - by Collin Raye

Glory Days - by Bruce Springsteen

Load Up the Bases - by Whiskey Falls

Can you add any other songs?

Answers to Baseball Trivia:

Baltimore Orioles

Montreal Expos

Pitched a perfect Game

Fenway Park

Harry Carey Cubs announcer

Jim Bagby

Cooperstown NY

Chicago

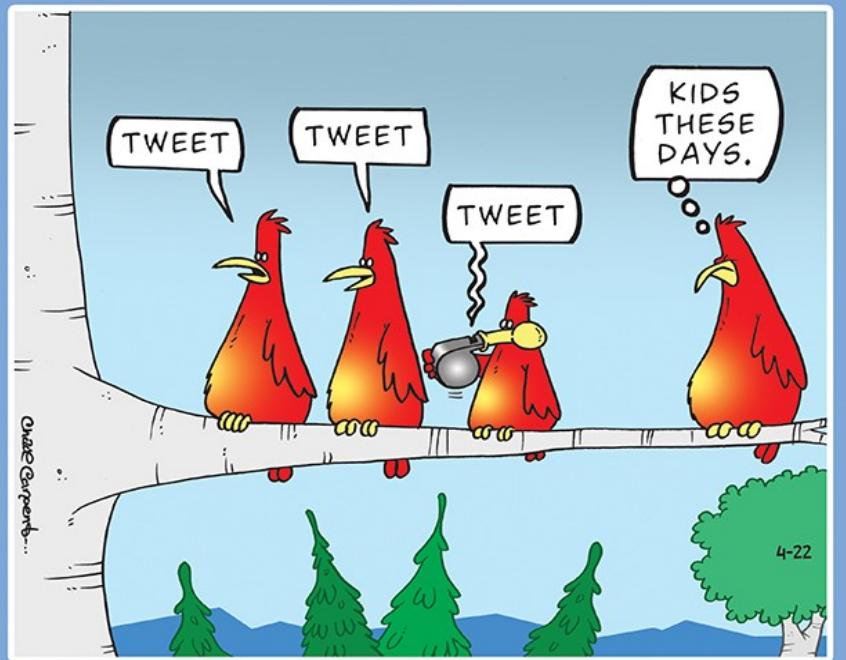
Ty Cobb

Horsehide

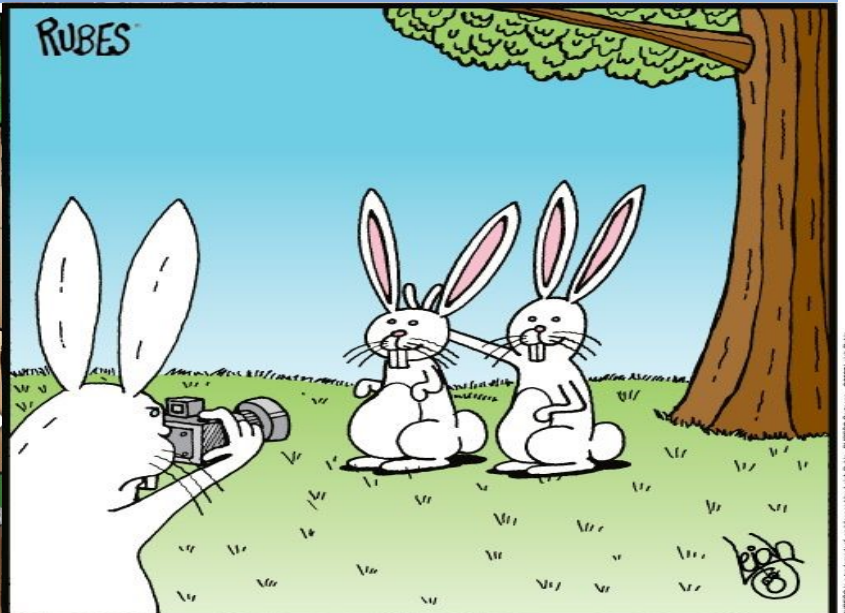
Happy Easter to everyone! Careful on the pranks April Fools Day. Batter Up and see you soon!

(heads up I've had a lot of time on my hands to research Trivia).

TUNDRA



Chad Carpenter...



RUBES is a trademark of, and owned by, Laugh-It-Up Studios. RUBES is a trademark of, and owned by, Laugh-It-Up Studios. ©2017 Laugh-It-Up Studios

TUNDRA



April Fools Word Search

Y H H O T A T U F J R S J X A S V E
Q Q P L O A N L B G M O N O V F L A
F O D F C V E O E T S A T D K H F D
Y B Q Z U D M S N A G I N A N E H S
M R H O E W E P R A N K S Z I E S P
N D E K P M S C H T U Y M H D X B O
E H A L F G U V D Y J A C C T H O O
X N V C O V M F V M U S H W R S F F
T N U T S O A L F J I Q H R J U N C
V L P U E J F G F M K R Q T D I X D
G J Y W S H K M U D O F R A X L K F
K X F L Z K J H O S Y I V V Q R J L
I G V K L B L A S T C A G U H F D W
Z L T C C D A S I K K M U A P G T Q
U D A G T W E W B U C H N O O S T I
A M F Y N Y C T C S Y E C A F Z E P
D L F M X C M G C K I N C Z V Q J V
V N F V F B L W N L U N M W A U F L

Shenanigans

Amusement

Jokes

Pranks

Mischief

Spoof

Tomfoolery

Trick

Stunt



Virtual Bulletin Board



If you have items you would like to “Post” let us know and we can add it to our Virtual Bulletin Board.

All items must be approved by the NSC Executive Director.

**A
T
T
E
N
T
I
O
N**

Hello, Jam and Jelly Lovers!

The Domestic Engineers 
still have a nice selection of those goodies.

 *1 Pint: \$8.00* 
1/2 Pint: \$5.00

Buy any 6 jars - get 1/2 Pint free!
Buy any 12 jars - get 1 Pint free!

Phone Numbers to call: 567-3335, 741-2230, (623)694-7439

June Judy Vi

Let's Play Bridge!



Basic Rules. To play bridge you need four people, a table and a standard pack of 52 playing cards (you discard the jokers). The players form partnerships and partners sit opposite each other. Each player is assigned to one of the four points of the compass as they sit around the table. The object of bridge games is to win points by taking tricks off of your opponents.

I'm looking for Bridge players. My name is Loren Hill, give me a call.
209-531-6494



Alaskan Trivia



- 1.** The phrase 'the Kenai' refers to what area?
- 2.** What was the most well-known capitol of Russian America?
- 3.** What sport fish is dark purple on the back with silvery green sides?
- 4.** Who selected the Bald Eagle as the national emblem?
- 5.** How many miles does the state span from east to west? (1,500 2,400 3,600)
- 6.** Where is the largest collection of totem poles in the world found?
- 7.** How many miles of shoreline are in the state of Alaska?
(15,000 24,000 34,000)
- 8.** What is another name for Chum Salmon?

© 1985 Teddy's Toys & Co., All Rights Reserved.

Answers on page 12.



HAPPY BIRTHDAY



Carole Lund 4/01
 Arnold Mason 4/2
 Richard Pitta 04/4
 Richard Stern 4/4
 Bettie Tanner 4/6
 Ronna Olsen 4/6
 David Osbekoff 4/25
 Jeff Smith 04/28
 Bruce Neilson 4/30

John Russo 4/6
 Martesue Chapman 04/07
 Bobbie Eide 4/7
 Mela Chaney 4/11
 Kitty Thompson 4/11
 Dennis Ogren 04/12
 Josie Savoy 04/27
 Steve Pope 04/29
 Marj Wiley 04/30

Steve Stewart 4/13
 Karen Kuchinski 4/15
 Julie Wasser 04/16
 Kathy Rice 4/18
 Ed Harper 04/19
 Tandy Wallace 4/20
 Ann Platt 4/29



\$5 A Month Club

Thank you to the following who contributed to the club:

Jim Taylor	David & Judy Clemenson
Bob & Sharon Cook	Char & Byron Moore
Cathy Perry	Bruce Randall
Mary Holshouser	John & Janice Nofziger

We have a fund to provide items that are not in the budget.

If you would like to join the club, just bring or send a donation of \$5 any time you can.

THANK YOU!!!

Thank You

Dave Nordgren for trash removal and to all of those who helped out or donated but didn't sign the volunteer book.

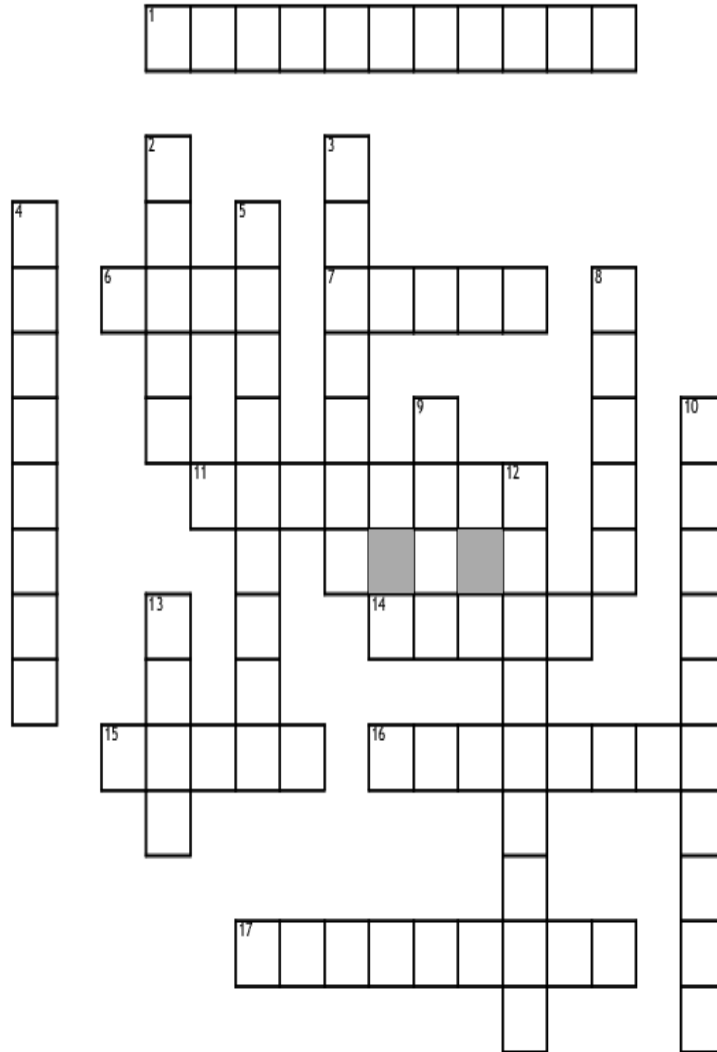
Thank you to Jim Beall, Gene Giovanini, Steve Vanek, Willard & Ruthe Bauman, Terry & Janie Nelson, David & Judy Clemenson, Howard & Nora Appel, Jeff Smith and Susan Welsh-Smith, Steve Stewart, Bob & Linda Pearson, Bill & Becky Hamilton, and anyone we may have missed for the donations.

Thank you to all our Members!!!
 Thank you to all our Volunteers!!!
 Thank you to all our Donors!!!
 Thank you to our Cooks!!!

Name: _____

Date: _____

Flowers



Across

1. Fragrant bell-shaped flower
6. Popular Easter flower
7. Popular drawn in spring pictures
11. Bright yellow garden flower
14. Floral symbol of prestige, in China
15. New Hampshire's state flower
16. Plant prized for its scent
17. Tall country garden flower

Down

2. Fresh as a ____
3. Harry Potter's aunt
4. Popular flowering pot plant
5. Large-flowered shrub
8. Field of ____'s
9. Thorny plant
10. Flower named for a legendary beast
12. Dandy king of the wild
13. 'Eye' flower



1. The Kenai Peninsula
2. Sitka
3. Arctic Grayling
4. Congress, in 1782
5. 2,400 miles
6. Ketchikan
7. 34,000 miles
8. Dog Salmon

Join NSC's Legacy Club!

Leave a Legacy and make a donation (monthly or not) of any amount to the NSC Endowment Fund or NSC Operations and once your donations reach \$500, your name will be added our donor tree. Endowment Fund Donations provide long-term investment income for the Senior Center.



Donor Tree Wall Levels of Giving:

- Tree Leaf: \$500. to \$999.
- Ptarmigan: \$1,000. to \$4,999.
- Crane: \$5,000. to \$9,999.
- Owl: \$10,000. to \$24,999.
- Eagle: \$25,000 +

If you would like to donate online, visit our website
NinilchikSeniors.org

At the bottom of the Donations page there is a button to click.

About The Ninilchik Senior Center

Our Mission

We are dedicated to making life easier, more interesting, and providing assistance to others in need among our members, as well as the surrounding community, in ways which lift the spirit and give a feeling of love to each other. We are dedicated to assisting one another through cooperation, respect, and strength of spirit, so that everyone feels welcome and their contributions valued.

Board of Directors

President: Dick Hawkins
V. President: Viola Nordgren
Secretary: Kaye Waldsmith
Treasurer: Sharon Cook
Trustee: Steve Vanek
Trustee: Cheryl Doyle
Trustee: Lynn Harding

Endowment Trustees

Chair:
Vice Chair:
Treasurer: John Nofziger
Trustee: Lenore Jones
Trustee: David Clemenson

Staff

Executive Director: Julie Otto
Adm. Assist/Bookkeeper:
Tandy Wallace
Cook: Marti Sue Chapman
Cook/Maintenance: Rick Ferguson
Trans. Driver: Mark Brees
NSC Homemaker: Casey Campbell &
Lala Powell

Join us for lunch!

Lunch is served at 12:00 pm Mon-Fri.
Suggested donation:
\$7 for members, \$11 for non-members
Lunch includes: soup,
salad, entrée and dessert

Events and Activities

Weekly

Mondays: Belly Dancing 10:30 am
Quilting/Sewing 1-4 pm

Tuesdays: Summer only: Activities including:
Cornhole & horseshoes

Wednesdays:
Yoga 10:30 am
Bingo (after lunch 1:15 pm)

Thursdays: Game Day 1-4 pm
Quilting/Crafts 10am-4pm

Fridays: Yoga at 10:30 am
Trivia during lunch (summer)
Knitting 1-4 pm
Pool 1-4 pm

Not all activities are happening at this time due to Covid, contact the senior center for details.





So far this year (2020), the center received \$231.47 from Fred Meyer through their community rewards program. Thank you to those who participate and make this possible.

If you shop at Fred Meyer, please consider linking your Rewards Card to donate to the center. Fred Meyer will donate money to the center whenever you make purchases; this will not affect the personal rewards associated with your account. Sign up online at: <https://www.fredmeyer.com/topic/community-rewards-4>

The center's Organization Identification Number is GP013 .

Thank you!!!

The Senior Center is partially funded by these Corporate Sponsors



PJK LLC



So far this year the center has received \$33.91 from Amazon Smile. Consider signing up to support the Ninilchik Senior Center through Amazon Smile. Simply connect your account via this link: <https://smile.amazon.com/ch/52-1323828>, and Amazon will automatically make a donation to the center every time you make a purchase, at no cost to you. Thank you to those who are already participating.

- Alaska Food Coalition
- Amazon
- Enstar
- Fred Meyer/Kroger
- HEA
- Kenai Peninsula Borough
- Meals on Wheels America
- Peninsula Bishops Attic
- PJK LLC
- Private Donations
- State of Alaska/NTS Grant