



# Ninilchik Senior Center

PO Box 39422. 66265 Aspen Ave. Ninilchik, AK. 99639 Phone: 567-3988 Fax: 567-3988 www.NinilchikSeniors.org

## Coming Up

### **BINGO!**

Wednesdays after lunch

### **Night Bingo**

Tue 10/1 at 6 pm  
Doors open at 5:30

### **Columbus Day Center Closed**

Mon 10/14

### **Board Meeting**

Thu 10/17

### **Sew Saturday**

Sat 10/19

## **Halloween**

Thu 10/31

**Halloween  
Party**

## October 2019



### A Note From the President of the Board:

Happy Fall to All.

So much for my poetic skills. We are having very nice fall weather however, even the few days of rain was nice because we needed that rain so much. Now it is time to get motivated to get all the outside chores done that need to get done before the snow comes. OH! Did I just say the "S" word? Shame on me.

We have been seeing our snowbirds start to depart for warmer climates and we will be seeing more of you leaving in the next few weeks. If you are planning to leave us for the winter we pray for safe travels and look forward to seeing you next summer. Make sure that the Center has your email address. You don't want to miss out on the monthly news letter. Tandy does such a wonderful job of putting together our monthly newsletter. Thank her when you get a chance. Once again I must brag about the staff and volunteers at the Senior Center. We had an occasion when Julie was gone on vacation and Tandy dislocated her should and was out for a couple of days. Casey stepped up to fill in in the office and she did a wonderful job. Thanks also to Cheryl Doyle for stepping in to help in the office during this period. Thank you so much. If somebody else helped out also sorry I didn't mention you by name, but know that I appreciate everything that you did.

We also received a very nice moose. Thank you to Fish and Game for letting us know about it, and to those of you that helped by going to Homer to pick it up and helping to process it. That will give us more that a few meals in the months to come.

Finally, I want to thank everybody who came to support the Center at our Fall Fundraiser. It was a success again. In the neighborhood of \$10,000 raise to help your Senior Center. It was a fun evening.

~ Dick Hawkins

# Thank you for helping with the Moose Project!

Terry Nelson, David Clemenson,  
Arnold Mason, Gene Giovanini,  
Ron Jorgensen



*The Fall Fundraiser was a Success!!!*

*The Board and the Staff want to say*

***Thank You***

*To Everyone who helped and donated and  
attended the event!*



**Ninilchik Senior Center's**

# **HOLIDAY BAZAAR**

Space is available - call 907-567-3988

**NOV 9, 2019 • 10 AM- 5 PM**

**66265 Aspen Avenue, Ninilchik**

**TABLES ARE \$25 EACH**

# Ninilchik Senior Center (NSC) Progressive Split the Pot Raffle

Cost: \$1 per ticket. Members may purchase as many tickets as desired each week. Tickets purchased are valid only for that week's drawing. Tickets must be purchased each week if the member wishes to participate in that week's drawing.

Drawing Time: Every Friday at 12:00 pm

Location: Ninilchik Senior Center 66265 Aspen Ave Ninilchik, AK



## Progressive Split the Pot Raffle Rules:

One winner every week.

Winner does not need to be present to win, however, if the person is not present, only 50% of the prize won will be awarded

Open to NSC members only. Membership must be current.

The Third Raffle will last up to 16 weeks. Future raffle duration may change without notice but will be announced at the beginning of each new raffle.

### 16 cards

(1) Eagle: grand prize winner: 50% of the pot

(1) Owl: 10% of the pot

(14) Ptarmigan: \$5



The third raffle is in progress and the Pot is up to \$760.92

[As of July 1, 2019 your membership must be current to participate in this raffle. Thanks!](#)

Winner of the Forth Raffle:

Linda Yost - Congratulations!



# Medicare Open Enrollment begins October 15 and ends December 7, 2019.

Cite the CMS website: <https://www.cms.gov/Medicare/Medicare-General-Information/MedicareGenInfo/index.html>

## Medicare Program - General Information

### Medicare is a health insurance program for:

People age 65 or older.

People under age 65 with certain disabilities.

People of all ages with End-Stage Renal Disease (permanent kidney failure requiring dialysis or a kidney transplant).

### Medicare has different parts that help cover specific services:

**Medicare Part A (Hospital Insurance)** - Part A helps cover inpatient care in hospitals, including critical access hospitals, and skilled nursing facilities (not custodial or long-term care). It also helps cover hospice care and some home health care. Beneficiaries must meet certain conditions to get these benefits. Most people don't pay a premium for Part A because they or a spouse already paid for it through their payroll taxes while working.

**Medicare Part B (Medical Insurance)** - Part B helps cover doctors' services and outpatient care. It also covers some other medical services that Part A doesn't cover, such as some of the services of physical and occupational therapists, and some home health care. Part B helps pay for these covered services and supplies when they are medically necessary. Most people pay a monthly premium for Part B.

**Medicare Part D (Prescription Drug Coverage)** - Medicare prescription drug coverage is available to everyone with Medicare. To get Medicare prescription drug coverage, people must join a plan approved by Medicare that offers Medicare drug coverage. Most people pay a monthly premium for Part D.

If you're a person with Medicare or help a person with Medicare, visit [Medicare.gov](https://www.Medicare.gov) to find more information about Medicare.

See the next page for the newest tool in helping to select a plan from Medicare.



# THE NEW MEDICARE PLAN FINDER

**Open Enrollment** October 15 - December 7

For the first time in 10 years, Medicare's most used tool, the **Medicare Plan Finder** has a new look and features.

## WHY?



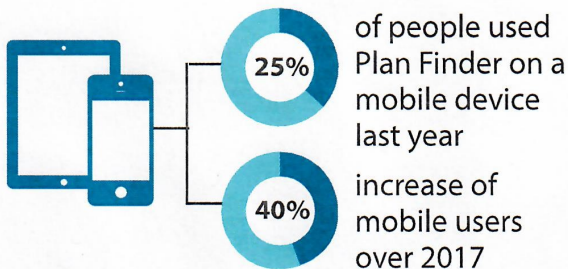
**61 million people** enrolled in Medicare



**20 million people used** Plan Finder during Open Enrollment 2018

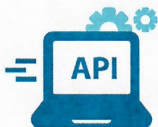


**10,000 people** enroll in Medicare **EACH DAY**



Medicare.gov is now **completely mobile optimized!**

## COMING SOON



**Real-time plan data API** for 3rd party users



## WHAT'S NEW?



**Personalized search** to find and compare plans



**More information** about extra plan benefits



**Improved comparison** of coverage options



**Simpler drug list built** from prescriptions you filled



More **accurate drug pricing**

## HOW TO ENROLL IN A PLAN



**Medicare.gov/plan-compare**



**1-800-MEDICARE**  
(1-800-633-4227)



Find a **local SHIP counselor**



Ask a **trusted agent or broker**

CMS Product No. 12065-P



# Quilt Raffle

King Size "Old Fashioned Quilt" in Purples

Donated by: Ruthe Bauman, Donna Schaeztle,  
Cheryl Doyle and Faye Woodhead  
Thank you Ladies!!!

The Winner of the Quilt is  
Janice Pearson!





# Alaskan Trivia

1. In aviation, who is known as a “goose”?
2. What was unique about election day in Alaska in November 8, 1960?
3. True/False Tlingit Indians in southeast have stories of a monster that lives in Lituya Bay.
4. Name the largest island in southeast Alaska.
5. How many miles does the state span from north to south?
6. What is the name of the sea animal that is a nuisance and a fish robber of the commercial fishermen?
7. What is the official state tree of Alaska?
8. In 1976, what city was proposed to become the new capitol of Alaska?
9. What is a native gathering held to celebrate any kind of event?
10. In what year was Alaska’s first exploratory oil well drilled? (1898, 1927, 1953)
11. Name three of the six geographic regions in the state.
12. Some native cultures in Alaska believed that the frog had what special quality?

Answers on Page 10







**amazon**smile

**You shop. Amazon gives.**

So far the center has received \$94.27 from Amazon Smile. Consider signing up to support the Ninilchik Senior Center through Amazon Smile. Simply connect your account via this link: <https://smile.amazon.com/ch/52-1323828>, and Amazon will automatically make a donation to the center every time you make a purchase, at no cost to you. Thank you to those who are already participating.

## A Note from the Executive Director

October is here! September was a pretty wet and rainy month but I'm so thankful for this as we needed the rain. October also marks the end of the gazebo season. A huge thank you to all of our volunteers and those who donated as you all helped make the gazebo a success again this summer! Once again we were able to open the gazebo pretty much every day! Just because the gazebo is closed, please don't think you can drop off donations! We are happy to take your donations all year long. Donations can be dropped off at the center during business hours and please remember, we do not take furniture, appliances, or used computer or printer equipment.

October also brings with it Halloween! Marti Sue has a special menu planned for that day and we've got some other tricks and treats planned as well. Come in and join us if you can! October can also bring with it that dreaded "s" word....snow! As you prepare for winter's arrival, don't forget about packing a winter survival kit for your car. Winter driving is tricky sometimes here in Alaska and that old adage rings true, "Better to be safe than sorry!"

*~Julie Otto*

# Heating Assistance Applications are available starting October 1, 2019

You can go online to apply or call  
1-800-470-3058

## Alaskan Trivia Answers

Questions & Answers are from "The Alaska Game of Trivia" by Teddy's Toys 1985

1. Amphibious airplane capable of landing & taking off on water or land.
2. Alaska's first presidential election.
3. True.
4. Prince of Wales Island.
5. 1,400.
6. Sea Lion.
7. Sitka Spruce.
8. Willow.
9. Potlatch
10. 1898.
11. Southeastern, Southwest, Northwest, Arctic, Yukon (Interior), South Central.
12. Guardian spirit, a bringer of good fortune, supernatural companion.



# BINGO

*Now with Monetary prizes! Don't miss out on the fun!*

**At**

## **The Ninilchik Senior Center!**

Wednesdays after lunch

\$5 for 6 games!

| B  | I  | N                   | G  | O  |
|----|----|---------------------|----|----|
| 4  | 26 | 43                  | 59 | 70 |
| 9  | 30 | 41                  | 55 | 68 |
| 7  | 23 | FREE<br>32<br>SPACE | 50 | 63 |
| 8  | 20 | 31                  | 60 | 75 |
| 13 | 18 | 34                  | 52 | 69 |

Win non-monetary prizes!

Have fun with Friends!



Play Bingo!!!



## Join us for Night Bingo!

### Tue 10/1 at 6pm

### Doors open at 5:30



Open to the Public.

You must be at least 19 to play.

See Bingo House Rules.



# Happy Birthday - October

Susie Chiri  
Russ Penrod  
Dottie Wiegman  
Rocky Regeon  
Lowell Wilcox  
Carol Harrington  
Jim Taylor

Daniel Yeckley  
Bill Hagerty  
Cathy Perry  
Marie Penrod  
Janice Pearson  
Ruth Taggart  
Diane Wilson

Midge Evans  
Julie Boll  
Victor Bergeron  
Steve Barrier  
Janie Nelson  
Larry Lachinski

Duane Wise  
Virginia Davis  
Deanna Smith  
Vi Nordgren  
Jerry Stout  
Sherry Broome



## Thank You

Dick Pitta, Doug MacLean, Willard Bauman, John Nofziger, Gene Giovanini for Monday town shopping trips. Dave Nordgren for town trips, trash removal and vehicle maintenance, and to all of those who helped out or donated but didn't sign the volunteer book.

Thank you to Jim Beall, Steve Vanek, Willard & Ruthe Bauman, Fred Marshall, Cathy Perry, Terry & Janie Nelson, Harriet Covey, Karen Covey, Char & Byron Moore, Vivian Moe, Bob & Julie Wasser, Wayne & Ruth Taggart, David & Judy Clemenson, and anyone we may have missed for the donations.

Thank you to all our Members!!!  
Thank you to all our Volunteers!!!  
Thank you to all our Donors!!!  
Thank you to our Cooks!!!

### \$5 A Month Club

Thank you to the following who contributed to the club:

Jim Taylor  
Cathy Perry  
John & Janice Nofziger

David & Judy Clemenson  
Fred & Terri Eggert

Bob & Sharon Cook  
Bob Pearson

Karen Covey  
Steve Stewart

We have a fund to provide items that are not in the budget.  
If you would like to join the club, just bring or send a donation of \$5 any time you can.

**THANK YOU!!!**

# About The Ninilchik Senior Center

## Our Mission

We are dedicated to making life easier, more interesting, and providing assistance to others in need among our members, as well as the surrounding community, in ways which lift the spirit and give a feeling of love to each other. We are dedicated to assisting one another through cooperation, respect, and strength of spirit, so that everyone feels welcome and their contributions valued.

## Board of Directors

President: Dick Hawkins  
V. President: Viola Nordgren  
Secretary: Kaye Waldsmith  
Treasurer: Sharon Cook  
Trustee: Steve Vanek  
Trustee: Cheryl Doyle  
Trustee: Lynn Harding

## Endowment Trustees

Chair: Kathryn Kennedy  
Vice Chair: Ronn Lund  
Treasurer: John Nofziger  
Trustee: Lenore Jones  
Trustee: David Clemenson

## Staff

Executive Director: Julie Otto  
Adm. Assist/Bookkeeper:  
Tandy Wallace  
Cook: Marti Sue Chapman  
Cook/Maintenance: Rick Ferguson  
Trans. Driver: Mark Brees  
NSC Homemaker: Casey Mae

## Join us for lunch!

Lunch is served at 12:00 pm Mon-Fri.  
Suggested donation:  
\$7 for members, \$11 for non-members  
Lunch includes: soup,  
salad, entrée and dessert



## Events and Activities

### Weekly

**Mondays:** Quilting/Sewing 1-4 pm

**Tuesdays:** Summer Activities including:  
Cornhole, trivia & horseshoes

**Wednesdays:**  
Bingo (after lunch 1 pm)

**Thursdays:** Game Day 1-4 pm  
Quilting/Crafts 10am-4pm

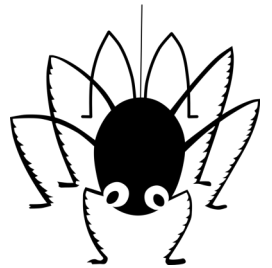
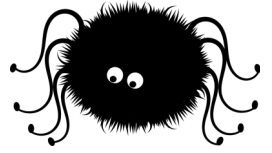
**Fridays:** Trivia during lunch  
Knitting 1-4 pm  
Pool 1-4 pm



# Spiders

Find and circle all of the spider species and anatomy words that are hidden in the grid. The remaining letters spell a secret message.

O T R I H W O D I W K C A L B E G R O L  
 E G O N I T A P E D I P A L P S E T H B  
 S O R T R A E H F M S I A R F D D N E G  
 U R R E A T A X O U E G R B W A A T V N  
 O C I S F A R N A N N S E I D M N I R I  
 M H M T A A E X A S I N D L S O O G N R  
 T A U I L V C C A L R O E T T L M A S E  
 I R Y N S T I E K R W E N L I H H E E D  
 Y D E E L L L H D A O U C N W R G E N N  
 N E L S E G E K E R H H D L S E X I S A  
 E K L P T N H S C N O N T G U O B S E W  
 H C O L G E C F E O A O N T S S A C C N  
 C A W E O S R D I L C U D K U R E A L A  
 I B G A P W L E G S L A E P G I D R A I  
 L D A W T O S K N K H L E M A C E D W L  
 E E R E G E L A O N E I R P H R A I S I  
 I R D B N I R O C T I Y N T P H T N E Z  
 W O E S S R B L O D B P E G O Y E A W A  
 E I N A L U T N A R A T S S S G S L H R  
 G I A N T H U N T S M A N T E H E A D B



ABDOMEN  
 BLACK WIDOW  
 BOOK LUNGS  
 BRAZILIAN WANDERING  
 CAMEL  
 CARDINAL  
 CHELICERAE  
 CLAWS  
 EIGHT LEGS  
 ESOPHAGUS  
 EXOSKELETON  
 EYES

FANGS  
 FISHING  
 FUNNEL WEB  
 GIANT HUNTS-MAN  
 GOLDEN HUNTS-MAN  
 GRASS  
 HEAD  
 HEART  
 INTESTINE  
 LICHEN  
 MIRROR

MOUSE  
 OGRE FACED  
 ORCHARD  
 PEACOCK  
 PEDIPALPS  
 PELICAN  
 REDBACK  
 RED WIDOW  
 SETAE  
 SILK GLAND  
 SILKHENGE

SPINNERETS  
 TARANTULA  
 TEXAS RECLUSE  
 THORAX  
 TRAPDOOR  
 VENOM  
 VIOLIN  
 WATER  
 WEBS  
 YELLOW GARDEN  
 YELLOW SAC







The Senior Center provides transportation for those needing to go to Kenai/Soldotna. We offer one trip to town a week, usually on Tuesday.

The van departs Ninilchik around 9:30 am and would return from town around 2:30 pm.

**Soldotna**

(with stops at Fred Meyer, Safeway and your medical appointments)

**Or Kenai**

(with stops at Walmart, Three Bears, Safeway & your medical appointments)

Suggested donation is \$15 per round trip.

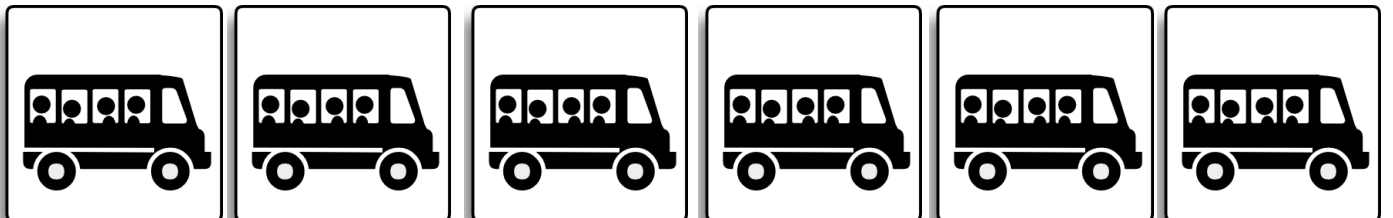
~~~~~

**The Senior Center can also provide transportation to the center for lunch.**

If you would like to take advantage of any of these services:

Please call the office to schedule

**(907) 567-3988**





Last year (2018), the center received \$236.67 from Fred Meyer through their community rewards program. In 2019, so far we have received \$199.63. Thank you to those who participate and make this possible.

If you shop at Fred Meyer, please consider linking your Rewards Card to donate to the center. Fred Meyer will donate money to the center whenever you make purchases; this will not affect the personal rewards associated with your account. Sign up online at: <https://www.fredmeyer.com/topic/community-rewards-4>

The center's Organization Identification Number is GP013 .

**Thank you!!!**

## The Homemaker Assistance Program

Is for eligible individuals 60 years and older who really need a little help around the house.

The program includes taking out the trash, sweeping & mopping the floors, vacuuming, cleaning the bathroom, making the bed, laundry, cleaning the kitchen, putting away dishes or groceries, etc.

***Please call or visit the office to see if you qualify for this program.***

***YOUR NTS HOMEMAKER IS HERE TO ASSIST YOU IN YOUR EVERYDAY NEEDS. If you have any questions, please call the office at (907) 567-3988.***

The Senior Center is partially funded by these Corporate Sponsors



Peninsula Internal Medicine



Alaska Food Coalition  
 Alaskare Home Medical Equip.  
 Amazon  
 Aspen Hotel / Kenai Residence  
 Dolifka & Associates, P.C.  
 Enstar  
 Fred Meyer/Kroger  
 HEA  
 Kenai Peninsula Borough  
 Lambe, Tuter & Wagner  
 Meals on Wheels America  
 Niniichik Family Dentistry  
 Peninsula Memorial Chapel  
 PJK LLC  
 Private Donations  
 State of Alaska/NTS Grant  
 American Legion Post 18